

Baxter



SmartCare Remote Management

Remote Control

Take control of the health and well-being of your connected monitors by proactively managing them from a single, remote location.

Remotely Monitor the Health of Your Connected Devices

Downtime with patient monitoring devices isn't simply an inconvenience or nuisance. It stands in the way of your clinical teams' ability to provide care for patients.

SMARTCARE REMOTE MANAGEMENT IS AVAILABLE FOR:



Welch Allyn Connex 360
Vital Signs Monitor



Welch Allyn Connex
Spot Monitor



Welch Allyn Connex
Vital Signs Monitor



Welch Allyn Connex
Integrated Wall System

Inadequate medical device software management can delay a facility's response to safety alerts, or allow cybersecurity vulnerabilities to be exploited and impact patient safety.¹

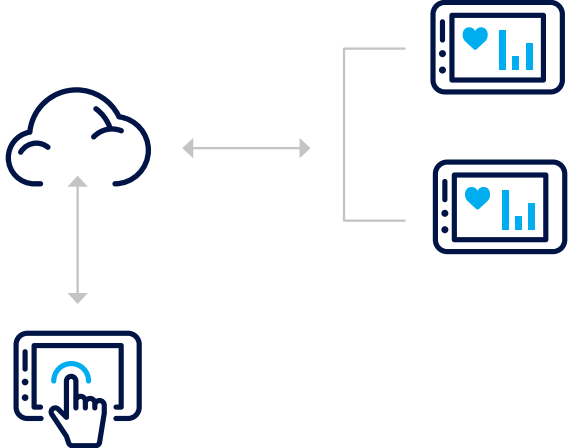
PROTECT YOUR VITAL MONITORS

Getting patients back on their feet means helping to ensure your fleet is functioning at its finest. Having consistent and timely management of your connected monitors allows you to better allocate your service team's resources.



HOW IT WORKS*

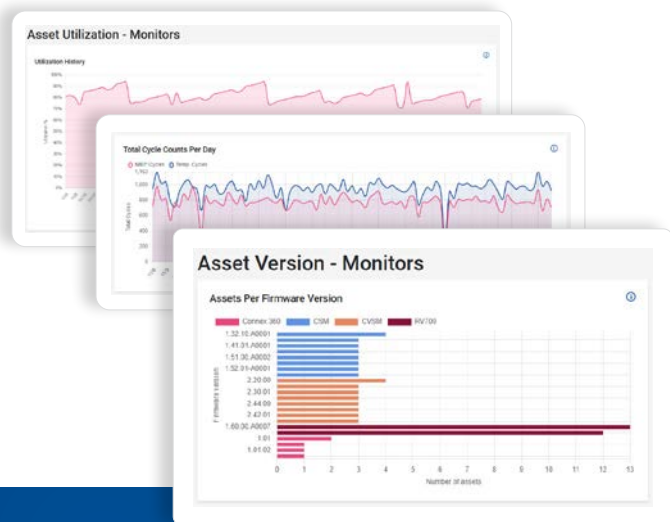
SmartCare Remote Management is a platform that enables you to remotely manage and support your Baxter products. You can access and manage device service data for your connected vital signs monitors from one central location. It is a secure, cloud-based system that can scale to fit your facility's management requirements. **SmartCare** Remote Management never stores or transmits patient health information.



TAKE CONTROL

- Allows remote access and puts you in control of device management
- Remotely deploy the latest firmware versions for **Connex 360** and **Connex Spot Monitor**
- Reduces the need to physically touch each monitor
- Access up-to-date details on deployed assets, such as firmware version, battery health, and more
- Helps address evolving clinical needs with remote configuration deployment
- Track preventative maintenance schedules to ensure each device is maintained appropriately
- Remotely locate devices throughout facilities with Access Point mapping
- Help prevent manual data entry errors by importing device data into your Computerized Maintenance Management System





NEW FEATURE:

Actionable Insights Now Available for Connex 360

Actionable Insights offers reports and visualizations that provide details on your connected fleet of Connex 360 monitors, such as utilization data, firmware versions and more.



CONNECTED AND SECURE

Security and connectivity are vital to you, and your patients. With remote management, you can limit external touchpoints, prevent or reduce service calls from external sources, help ensure your monitors are configured properly, and much more.

Whether you're managing connected devices in one facility, or 50, Baxter can help. With a customized workflow for your organization, get new control and access of your equipment.

PROTECT YOUR INVESTMENT

Time is money. Whether helping to ensure your devices are fixed correctly the first time or supporting improved preventative maintenance efficiencies, **SmartCare** Remote Management can assist you. It's the remote portal that can help you keep your devices up to date while allowing your team to have time to focus on more pressing repairs or urgent matters.

Take control. Visit hillrom.com or contact your Baxter representative today.

Rx Only. For safe and proper use of the product mentioned herein, please refer to the appropriate Operator's Manual or Instructions for Use.

References

1. ECRI Institute. (2016, November 1). Top 10 Health Technology Hazards for 2017. Plymouth Meeting, PA, United States. Retrieved from ECRI Institute: https://www.ecri.org/Resources/Whitepapers_and_reports/Haz17.pdf

*Features may vary per device. Contact your Baxter representative to learn more.

Device limitations may limit certain functionality of **SmartCare Remote Management.

Baxter.com

Baxter, Hillrom, Connex, Connex 360, SmartCare and Welch Allyn are trademarks of Baxter International, Inc. or its subsidiaries.
US-CS165-220020 (v3.0) 02/2026